

# Humboldt Redwoods Marathon, Half Marathon, and 5K



**Six Rivers Running Club**

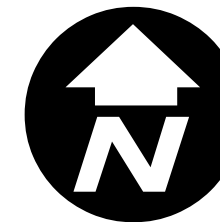
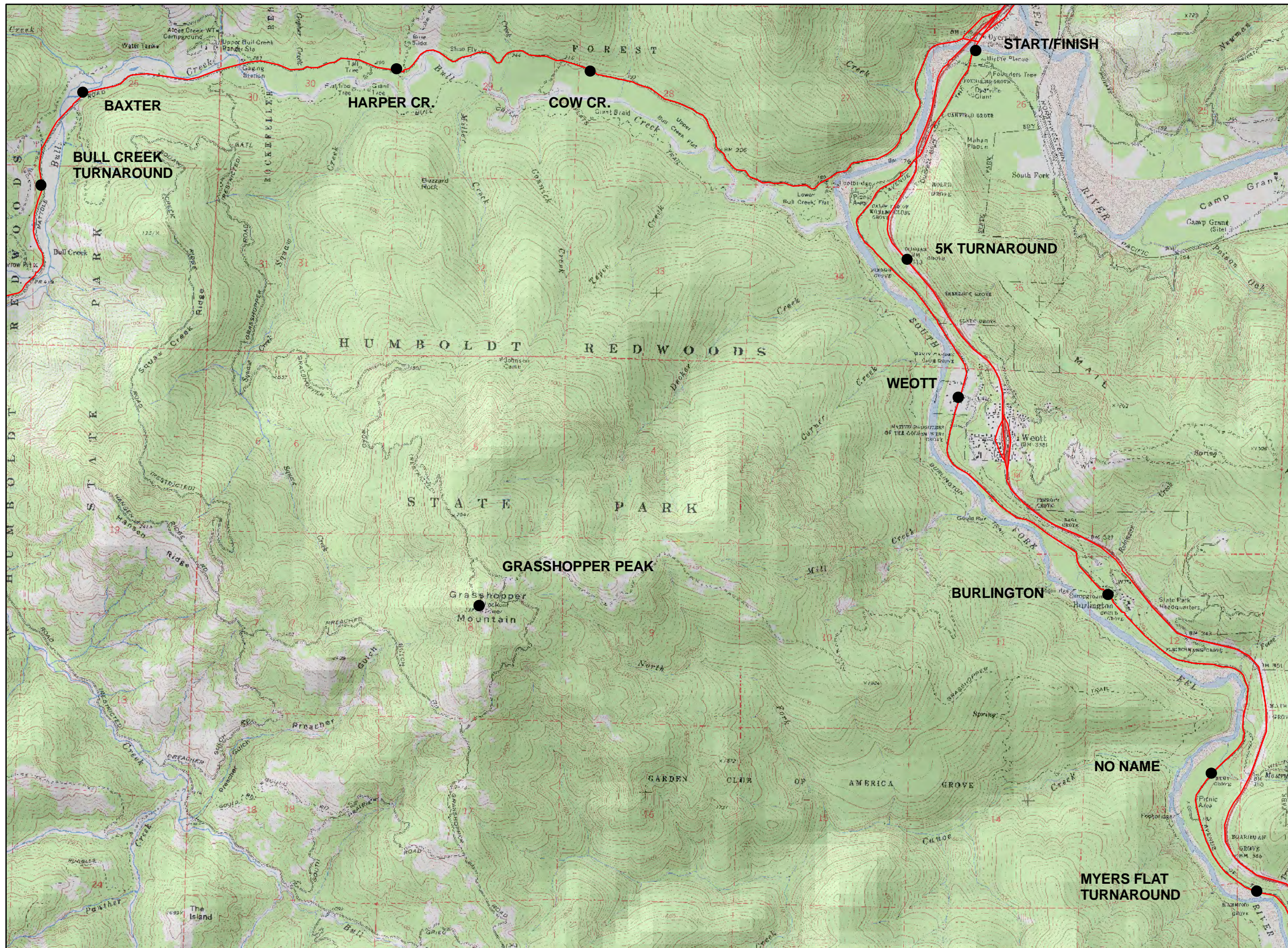
**Race Course Legend**

- 5K Course (Out and Back)
- Half Marathon Course (Out and Back)
- Marathon Course (Double Out and Back)

Topographic Map by U.S. Geological Survey  
Distances and Locations are Approximate  
Enhanced and Customized By: Earth Map Photo™  
www.earthmapphoto.com  
info@earthmapphoto.com

Marathon First Turnaround  
Half Marathon Turnaround





GRASSHOPPER PEAK REPEATER  
147.33 mHz, +600, 103.5

COMMUNICATOR LOCATIONS

- 1 5K TURNAROUND (OPTIONAL)
- 2 WEOTT
- 3 BURLINGTON
- 4 NO NAME
- 5 MYERS FLAT TURNAROUND
- 6 COW CREEK
- 7 HARPER CREEK
- 8 BAXTER
- 9 BULL CREEK TURNAROUND

# HUMBOLDT REDWOODS MARATHON

